



# Real-time liquidity systems to deliver **ECB's intraday sound practices**. Real-life examples from banks around the world.



Pete McIntyre  
FS Director  
Planixs GRP Ltd  
[pete.mcintyre@planixs.com](mailto:pete.mcintyre@planixs.com)

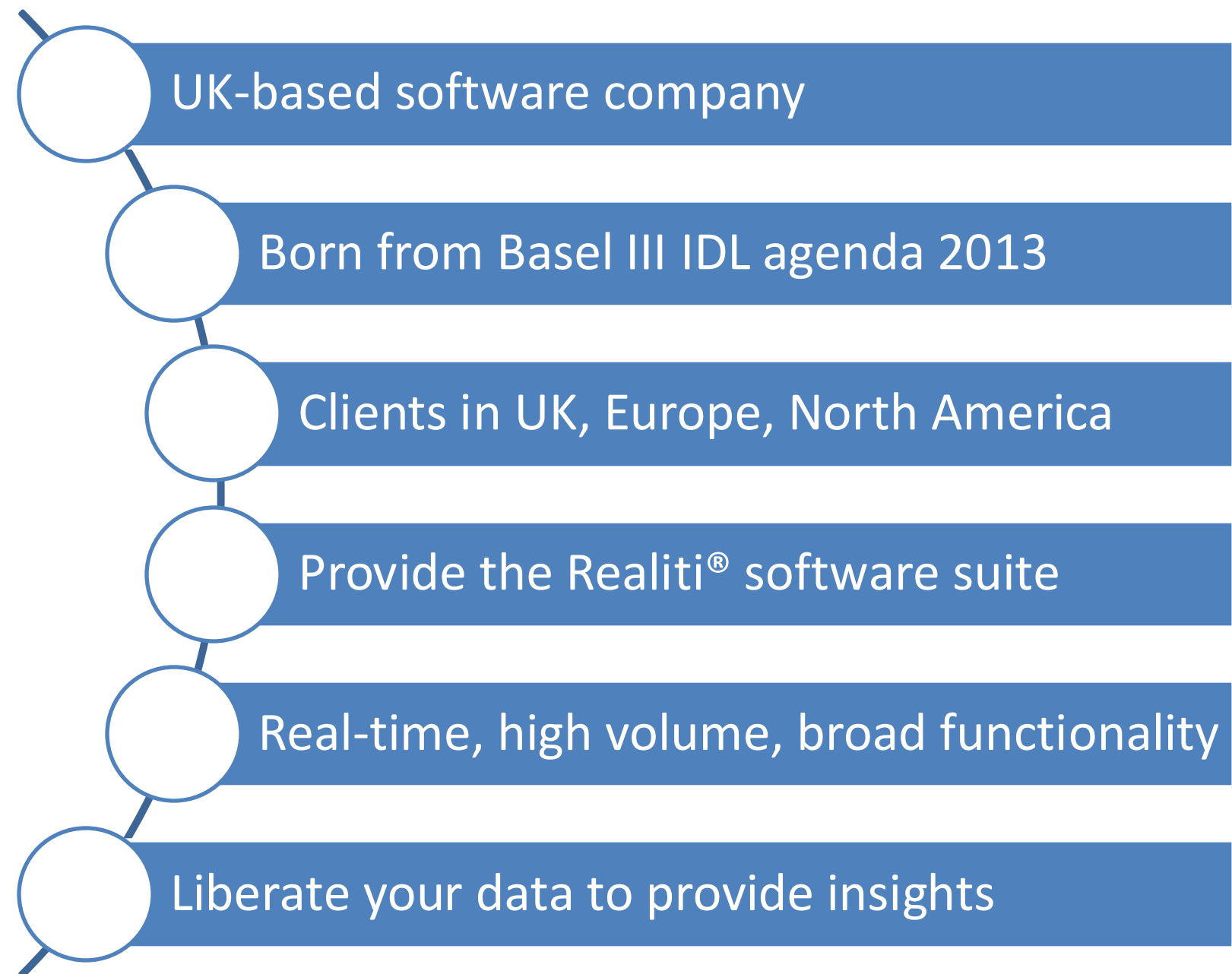
March 2025



# Agenda

- Who am I and who is Planixs?
- What's the role of data/systems in all this?
- What's hard to do?
- What does good look like?





## Sample Customers

 NatWest



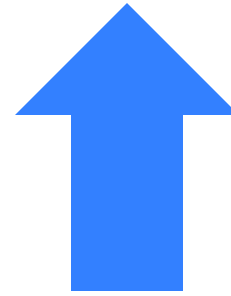
Scotiabank<sup>®</sup>



LB $\Xi$ BW



76 ECB Sound Practices



Intraday Framework

Governance

People

Processes

14/76

Data

Systems

62/76

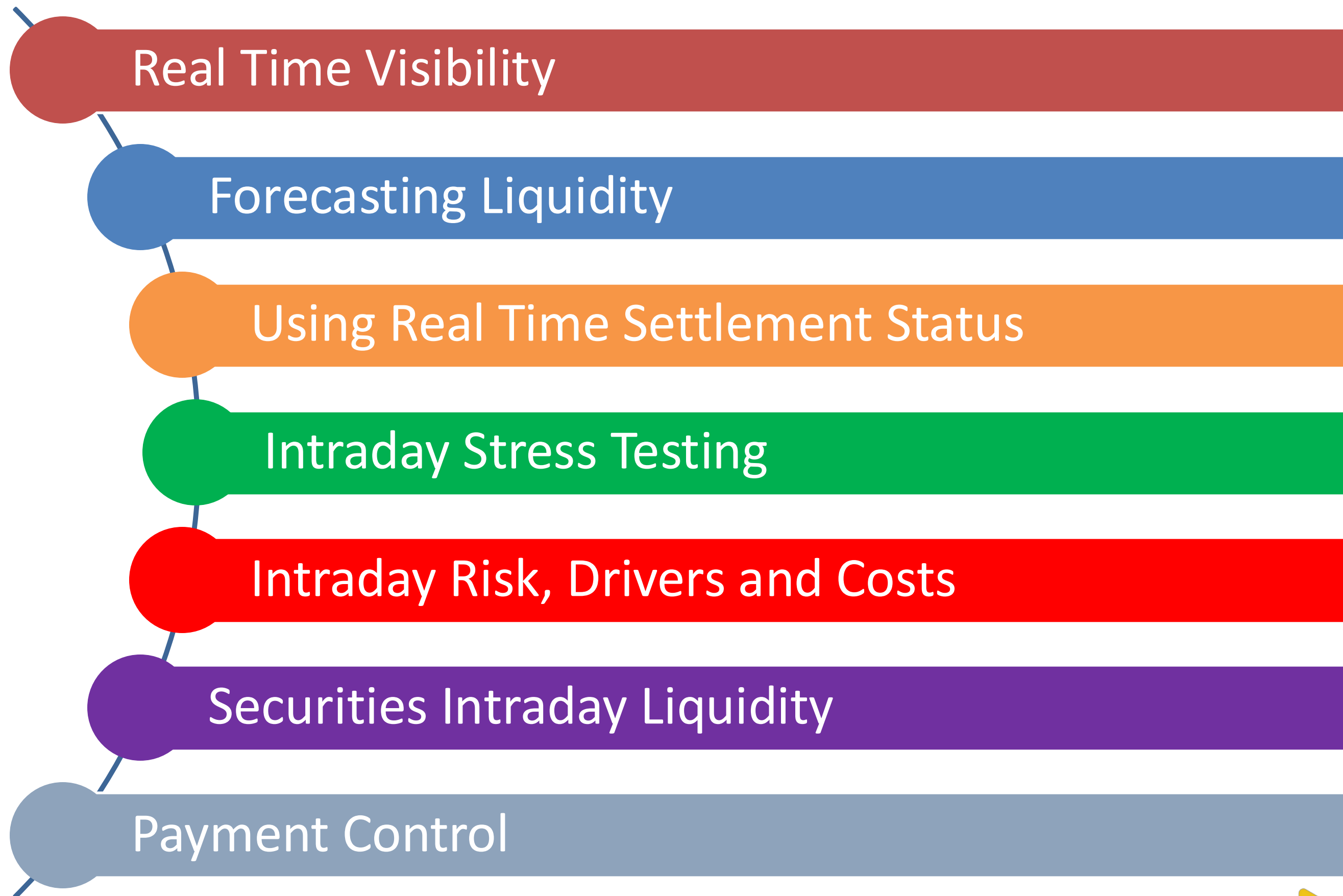
PLANIXS



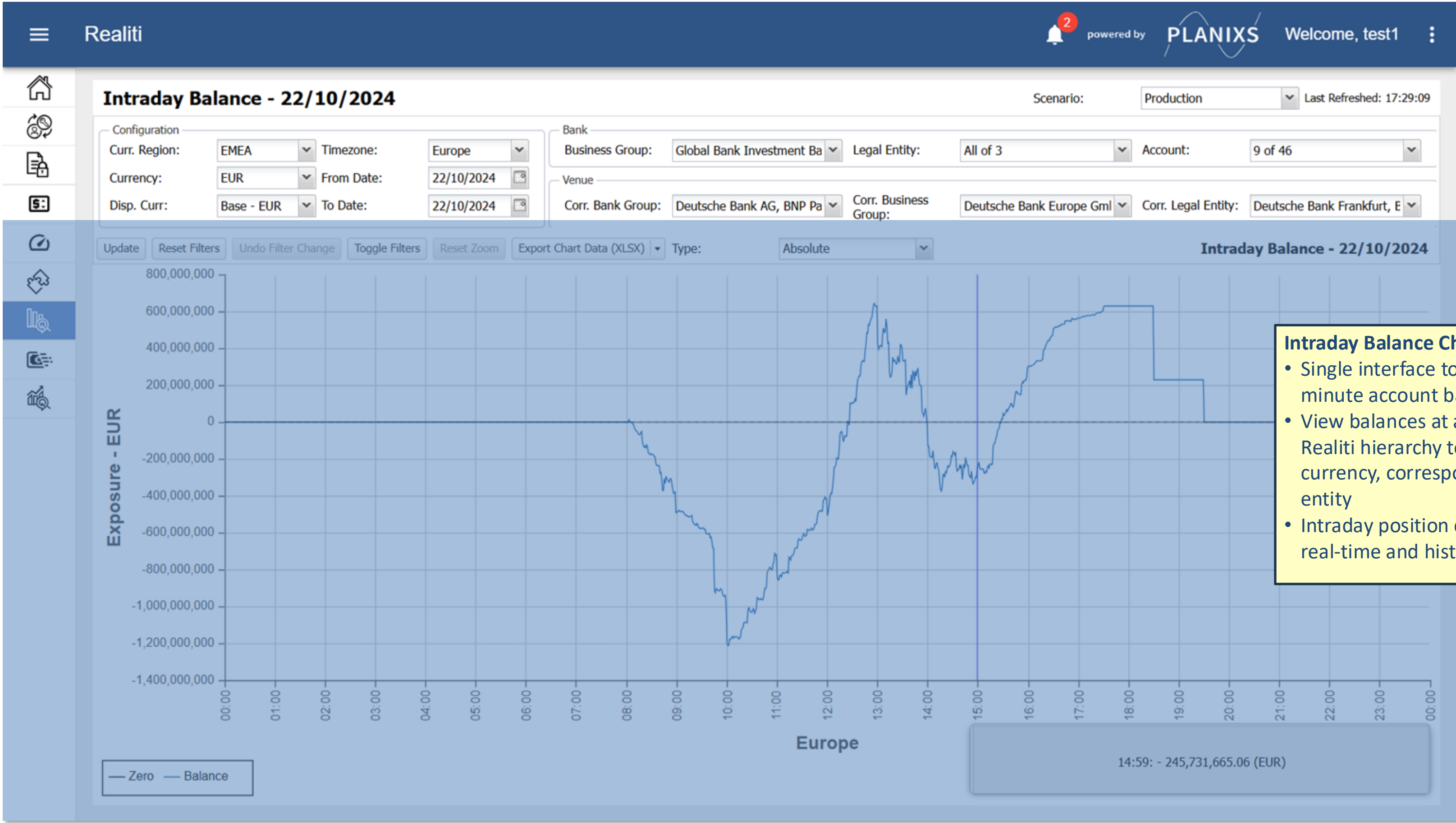
# What's hard to deliver?

- Technical challenges:
  - Data volumes and performance in real time
  - Real-time reconciliation / matching
  - Single platform to manage all requirements
- Plus Vincent's points





# Real Time Balance At Minute-by-Minute Detail



### Intraday Balance Chart

- Single interface to view minute by minute account balances
- View balances at any level. Use the Realiti hierarchy to group accounts by currency, correspondent or bank entity
- Intraday position can be monitored in real-time and historically



# Updating 'Pivots' & Transaction Views

Realiti

2

powered by

PLANIXS

Welcome, test1

1a Simple External - 07/11/2024

Last Refreshed: 17:38:17

Configuration

Curr. Region:

All of 3

Currency:

All of 15

Disp. Curr:

Base - GB

Timezone:

Europe

Date:

07/11/2024

Bank

Business Group:

Global Bank Investme

Legal Entity:

All of 3

Account:

43 of 46

Venue

Corr. Bank Group:

14 of 15

Corr. Business Group:

16 of 17

Corr. Legal Entity:

19 of 20

Update

Reset Filters

Export Transactions (XLSX)

Restore Saved Filters

Create Sweep

Undo Filter Change

Toggle Filters

1a Simple External - 07/11/2024

Pivot View Menu

Live Refresh

OFF

Live Position

ON

Position As Of:

17:38

Round Values

OFF

Toggle Grand Total

Currency	Legal Entity	Account	Start Of Day (Local)	Debits (Local)	Credits (Local)	Balance (Local)
EUR			-635,161.50	-14,420,648,988.66	14,420,648,988.66	-635,161.50
	Global Bank USA		-820,391.53	-	-	-820,391.53
		DB GBUSA EUR1	-820,391.53	-	-	-820,391.53
	Global Bank UK		-999.97	-6,360,259,429.79	6,360,259,429.79	-999.97
		DB GBUK EUR Ca...	-999.97	-5,671,509,429.79	5,671,509,429.79	-999.97
		DB GBUK EUR Ca...	0.00	-688,750,000.00	688,750,000.00	0.00
	Global Bank Europe		186,230.00	-8,060,389,558.87	8,060,389,558.87	186,230.00
		BNP GBEUR EUR1	0.00	-1,967,092,200.95	1,967,092,200.95	0.00
		BNP GBEUR EUR3	0.00	-	-	0.00
		DB GBEUR EUR C...	0.00	-3,911,385,813.63	3,911,385,813.63	0.00
		DB GBEUR EUR C...	0.00	-475,000,000.00	475,000,000.00	0.00
		DB GBEUR EUR C...	0.00	-1,706,911,544.29	1,706,911,544.29	0.00
		BNP GBEUR EUR2	186,230.00	-	-	186,230.00
GBP			2,349,729,517.65	-3,404,646,753.19	3,404,646,753.02	2,349,729,517.48
	Global Bank USA		-882,127.93	-	-	-882,127.93
		Barc GBUSA GBP2	-544,632.65	-	-	-544,632.65
		Barc GBUSA GBP1	-337,495.28	-	-	-337,495.28
	Global Bank UK		2,350,611,645.58	-3,404,646,753.19	3,404,646,753.02	2,350,611,645.41
		USBC GBUK GBP1	0.17	3,404,646,753.19	3,404,646,753.02	0.00

Pivot view

Grid displays aggregates of underlying transactions for a selected value date

•View individual balances on multiple accounts in one place

•Quickly 'drill' from aggregate figures to the underlying transactions

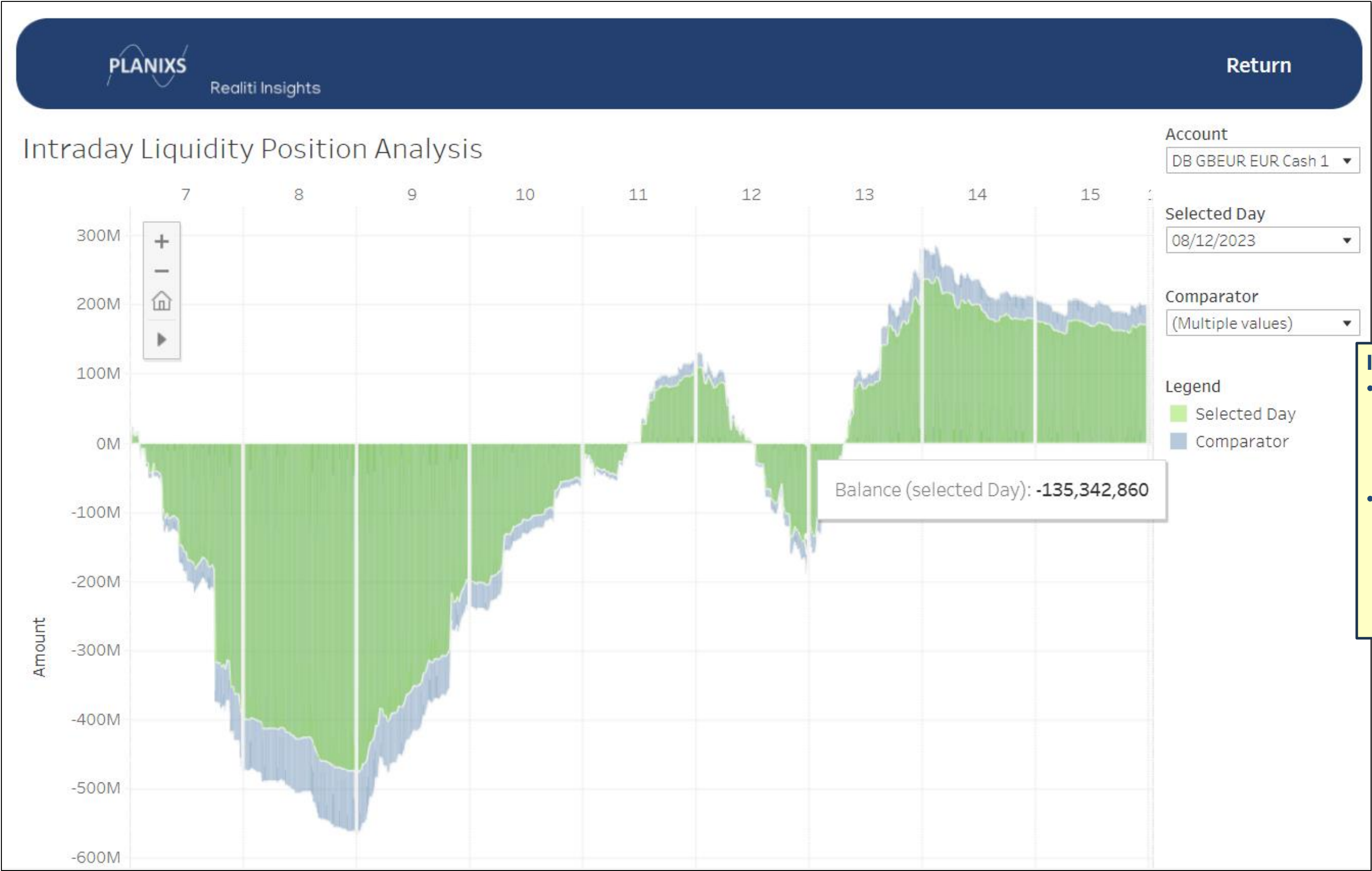
•'Live refresh' allows the data to be refreshed at a configurable time interval.

•'Position As Of' allows balances at a historical point in time to be viewed

•Users can build and save their own pivot views to suit various use cases



# Risk Management – Liquidity Look Back vs Today





Real Time Visibility

Forecasting Liquidity

Using Real Time Settlement Status

Intraday Stress Testing

Intraday Risk, Drivers and Costs

Securities Intraday Liquidity

Payment Control



# End of Day Projection: Start of Day

Realiti
powered by PLANIXS Welcome, test1

## 2b. Ledgers to Simple - 07/11/2024

Last Refreshed: 17:43:03

**Configuration**

Curr. Region: EMEA  
Currency: NOK, CHF  
Disp. Curr: Base - EU

Timezone: Europe  
Date: 07/11/2024

**Bank**

Business Group: Global Bank Investm Legal Entity: Global Bank UK Account: 3 of 46

**Venue**

Corr. Bank Group: Nordea, UBS AG Corr. Business Group: Nordea Transaction B Corr. Legal Entity: Nordea Oslo, UBS Zui

Update Reset Filters Export Transactions (XLSX) Restore Saved Filters Create Sweep Undo Filter Change Toggle Filters

Pivot View Menu Live Refresh OFF Live Position ON Position As Of: 17:43 Round Values OFF

Currency	Account	Start Of Day (Local)	Unsettled Dr	Unsettled Cr	Settled Dr	Settled Cr	Balance (Local)	EOD Proj (All Manual Adjs)	Unmatch
<b>CHF</b>		<b>87,689,660</b>	<b>-4,158,673,160</b>	<b>4,173,717,440</b>	-	-	<b>87,689,660</b>	<b>102,733,941</b>	
	UBS GBUK CHF2	23,919,157	-2,265,611,492	2,370,238,092	-	-	23,919,157	128,545,757	
	UBS GBUK CHF4	63,770,503	-1,893,061,668	1,803,479,348	-	-	63,770,503	-25,811,817	
<b>NOK</b>		<b>445,364</b>	<b>-1,010,898,630</b>	<b>1,012,157,395</b>	-	-	<b>445,364</b>	<b>1,704,130</b>	
	Nordea GBUK NOK2	445,364	-1,010,898,630	1,012,157,395	-	-	445,364	1,704,130	
<b>Grand total</b>		<b>88,135,024</b>	<b>-5,169,571,789</b>	<b>5,185,874,835</b>	-	-	<b>88,135,024</b>	<b>104,438,071</b>	

**Forecasting**

- Internal ledger data can be used to create forecasts of each account for a combination with balance, the forecast allow an End of Day balance figure to be cash management.
- Drill to the underlying transaction level view to view all details of transaction.

## Forecasting

- Internal ledger data is aggregated to create forecasts of the movements for each account for a given value date. In combination with a Start of Day balance, the forecasted movements allow an End of Day Projection balance figure to be calculated to aid cash management.
- Drill to the underlying internal in a transaction level view with the ability to view all details about each transaction.

# Realiti: Forward Ladders

Realiti

2 powered by Welcome, test1

---

## 2g. Forward Ladder - 08/11/2024

Last Refreshed: 14:27:45

**Configuration**  
 Curr. Region: EMEA  
 Currency: NOK, CHF  
 Disp. Curr: Base - GB  
 Timezone: UTC  
 Date: 08/11/2024

**Bank**  
 Business Group: Global Bank Investme...  
 Legal Entity: Global Bank UK  
 Account: 4 of 46

**Venue**  
 Corr. Bank Group: DNB Bank ASA, UBS ...  
 Corr. Business Group: DNB Bank, UBS Bank  
 Corr. Legal Entity: DNB Bank Oslo, UBS

Update   Reset Filters   Export Transactions (XLSX)   Restore Saved Filters   Create Sweep   Undo Filter Change   Toggle Filters

**2g. Forward Ladder - 08/11/2024**

Currency	Account	Start Of Day (Local)	EOD Proj (All Manual Adjs)	T+1	T+2	T+3	T+4	T+5
CHF		<b>87,689,660.46</b>	<b>98,343,488.03</b>	-	-	-	-	-
	UBS GBUK C...	23,919,157.06	122,996,776.63	-	-	-	-	-
	UBS GBUK C...	63,770,503.40	-24,653,288.60	-	-	-	-	-
NOK		<b>-201,323.00</b>	<b>-48,367,663.00</b>	<b>74,733,344.00</b>	<b>73,101,031.14</b>	<b>-41,207,842.27</b>	<b>69,365,438.15</b>	<b>50,402,893.00</b>
	DNB GBUK ...	0.00	6,764,054.00	17,348,632.00	14,358,138.14	11,765,353.14	-	-
	DNB GBUK ...	-201,323.00	-55,131,717.00	57,384,712.00	58,742,893.00	-52,973,195.41	69,365,438.15	50,402,893.00
<b>Grand total</b>		<b>87,488,337.46</b>	<b>49,975,825.03</b>	<b>74,733,344.00</b>	<b>73,101,031.14</b>	<b>-41,207,842.27</b>	<b>69,365,438.15</b>	<b>50,402,893.00</b>

**Cash Ladder**

- Consume forecasts real-time when the user is storing these cashflows in the database for the current date and account.
- Analyse cash ladder (cashflows which are aggregated for each day etc.)
- Running totals for each day available to denote forecasted end of month.

## Cash Ladder

- Consume forecasted cashflows in real-time when the trade is booked, storing these cashflows in the database for the appropriate value date and account.
- Analyse cash ladders for expected cashflows which are displayed in aggregate for each day (T+0, T+1, T+2 etc.)
- Running totals for each day are also available to denote each day's forecasted end of day position.



# Use of Product, Desk and Book

## Product Desk and Book

- Optionally extend scope of analysis to include Product, Desk and Book and drill through to the underlying transactions as required.
- Gain greater understanding of drivers of liquidity usage and prioritise / monitor accordingly.


# Identify time sensitive payments or large payments

Filters

Account: Citi GBUK USD1

Currency: USD

Value Date: 20-Feb-2025



EOD Projection

\$ -606,716,895.11

Settled Debit

Value \$0

Volume 0

Settled Credit

Value \$0

Volume 0

Opening Balance

\$104,949,561.64

Running Balance

\$ 0

Unsettled Debit

Value \$4,628,916, 241

Volume 47

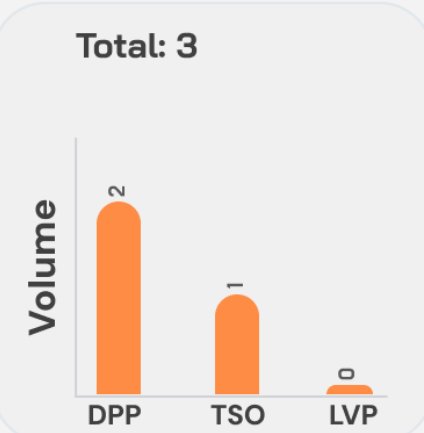
Unsettled Credit

Value \$4,117,249,784

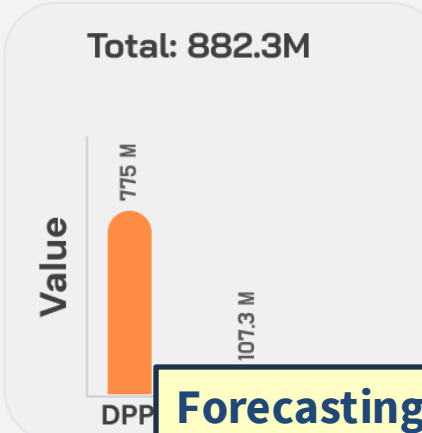
Volume 33

Large and Time Sensitive Payments

Total: 3



Total: 882.3M



Transaction Details

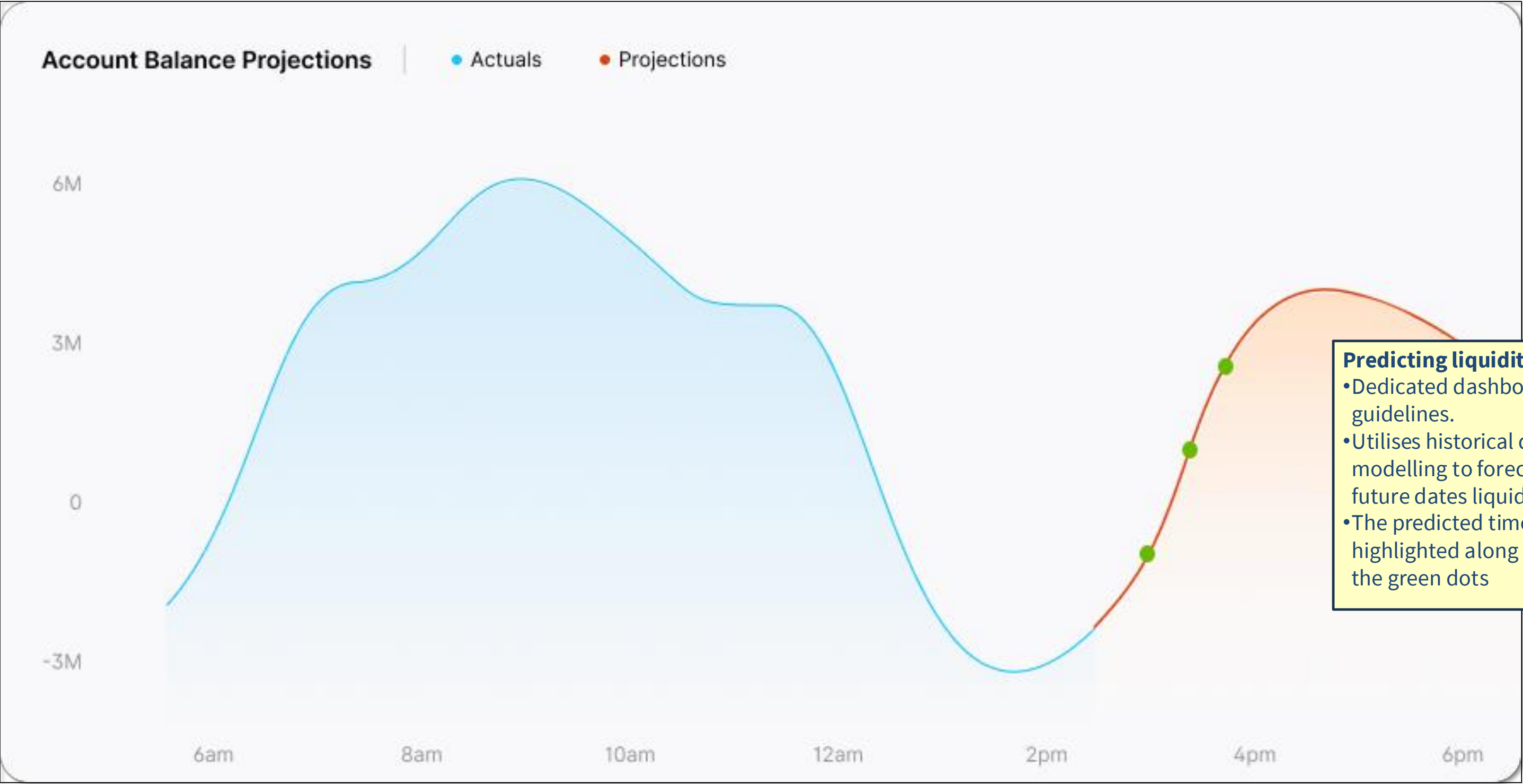
Transaction Ref.	Account	Counterparty	Created at	Transaction Type	Transaction Status	Avg. His. sett. Time	Required Sett. Time
3H6A4K3-34T7	Citi GBUK USD1	GB Euroclear	19-Feb-2025 14:21	DPP	Unsettled	03:51	05:00
ON554F1C-4010	Citi GBUK USD1	CLS	19-Feb-2025 11:37	TSO	Unsettled	06:31	07:00
6XZ9H129-6YJO	Citi GBUK USD1	GB BONY	18-Feb-2025 06:31	DPP	Unsettled	11:32	13:00

Forecasting materially important cashflows

- Dedicated dashboard aligned to ECB guidelines.
- Forward looking view of selected day's end of day projection and associated volume and value of debits and credits.
- Detailed view of materially important forecasted cashflows e.g. key large value payments, time sensitive payments (TSOs & discretionary priority payments)
- Included in the display is the required settlement time and average settlement time (based on history) to enable proactive management of future liquidity needs.



# Predicted Intraday Balance (LNNCP)



**Predicting liquidity usage**

- Dedicated dashboard aligned to ECB guidelines.
- Utilises historical data and predictive modelling to forecast today and future dates liquidity usage profile
- The predicted time of TSPs is highlighted along the usage graph via the green dots





Real Time Visibility

Forecasting Liquidity

Using Real Time Settlement Status

Intraday Stress Testing

Intraday Risk, Drivers and Costs

Securities Intraday Liquidity

Payment Control



## Using Real-time reconciliation: Approaching Cut Off

Realiti

 2 powered

### 2b. Ledgers to Simple - 31/10/2024

**Configuration**

Curr. Region: EMEA Timezone: UTC

Currency: NOK, CHF Date: 31/10/2024

Disp. Curr: Base - EUR

**Bank**

Business Group: Global Bank Investment Ba Legal Entity: Global Bank UK

**Venue**

Corr. Bank Group: Nordea, UBS AG Corr. Business Group: Nordea Transaction Bank, L

Update Reset Filters Export Transactions (XLSX) Restore Saved Filters Create Sweep Undo Filter Change Toggle Filters

Pivot View Menu	Live Refresh	Live Position	Position As Of:	Round Values
	<input type="checkbox"/>	<input checked="" type="checkbox"/>	11:15	<input type="checkbox"/>

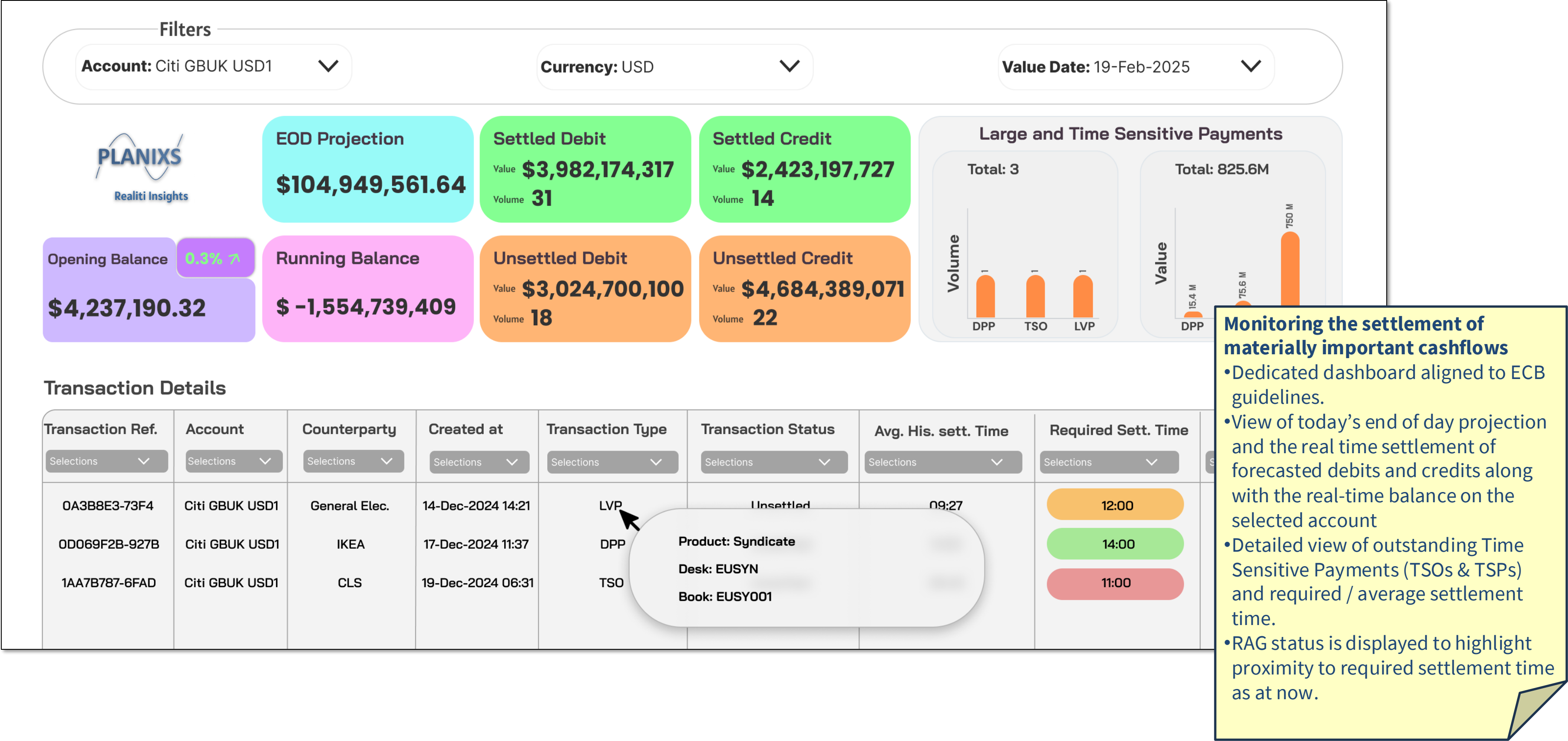
Currency	Account	Start Of Day (Local)	Unsettled Dr	Unsettled Cr	Settled Dr	Settled Cr	Balance (Local)	EOD Proj (All Manual Adjs)
<b>CHF</b>		<b>886,499</b>	-	<b>210,548,063</b>	<b>-4,081,417,573</b>	<b>3,865,348,563</b>	<b>48,534,076</b>	<b>-4,634,446</b>
	UBS GBUK CHF2	452,295	-	176,333,461	-2,082,355,905	2,012,287,266	24,660,243	106,717,119
	UBS GBUK CHF4	434,203	-	34,214,601	-1,999,061,669	1,853,061,297	23,873,833	-111,351,566
<b>NOK</b>		<b>1,188,954</b>	-	<b>81,157,236</b>	<b>-1,235,667,501</b>	<b>1,237,422,061</b>	<b>2,943,515</b>	<b>84,100,751</b>
	Nordea GBUK NOK2	1,188,954	-	81,157,236	-1,235,667,501	1,237,422,061	2,943,515	84,100,751
<b>Grand total</b>		<b>2,075,454</b>	-	<b>291,705,299</b>	<b>-5,317,085,074</b>	<b>5,102,770,625</b>	<b>51,477,591</b>	

**Real time reconcil**  
 • Intraday Reconcil

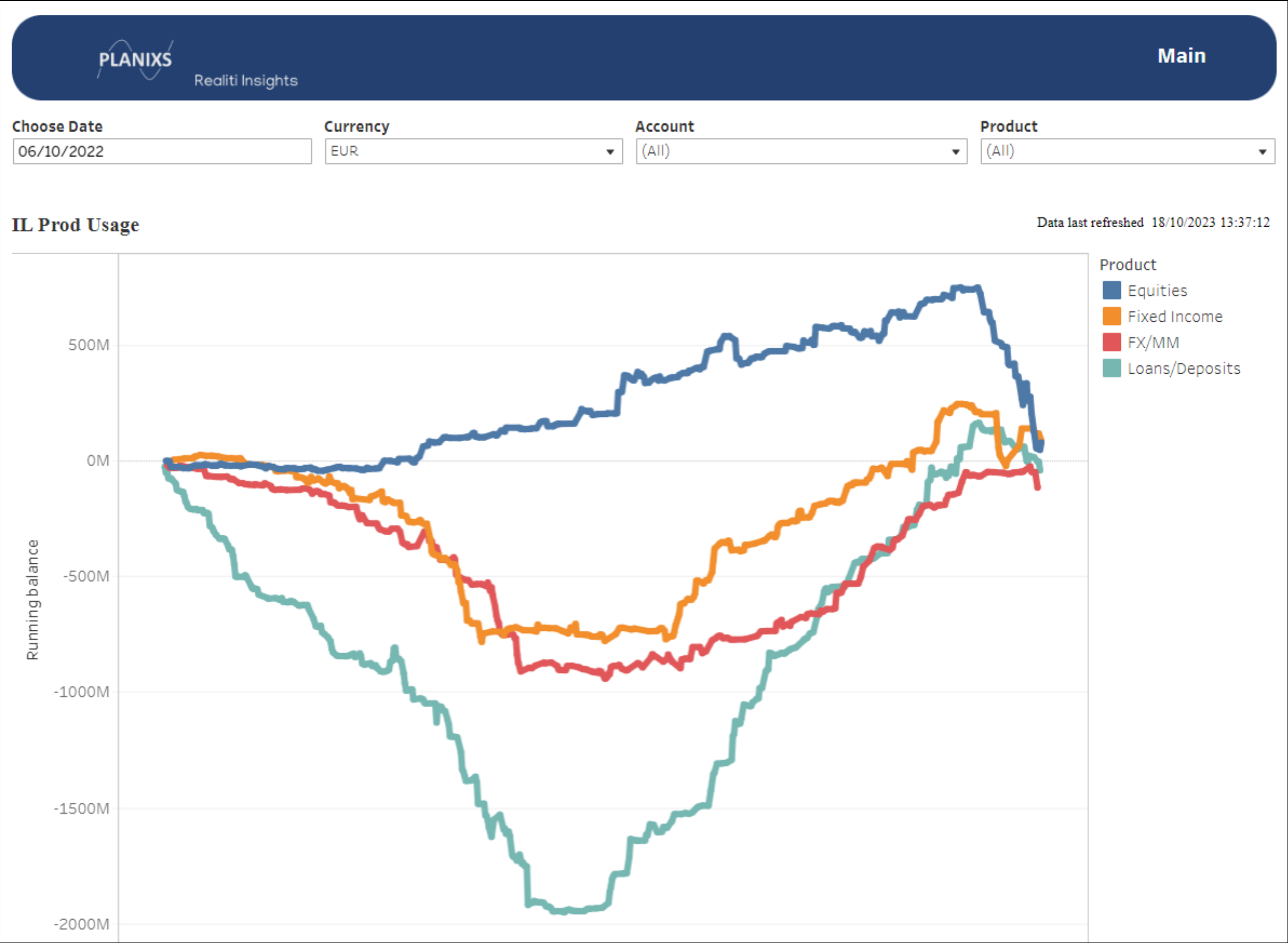
## Real time reconciliation

- Intraday Reconciliation drives the linkage between projected cashflows and actual cashflows.
- Intraday Reconciliation therefore, enables much more timely awareness of the progress of settlement.
- Enhance the bank's funding processes by highlighting exceptions throughout the day for investigation

# Current Day Time Specific Payment Monitoring



# Intraday Usage by Product / Segment / Counterparty etc



## Liquidity Analysis

- Analyse intraday usage broken down by multiple attributes e.g. product, segment, counterparty
- Analysis can be for single account or multiple accounts/currencies
- Insight can be used for various purposes e.g. FTP for intraday costs





Real Time Visibility

Forecasting Liquidity

Using Real Time Settlement Status

Intraday Stress Testing

Intraday Risk, Drivers and Costs

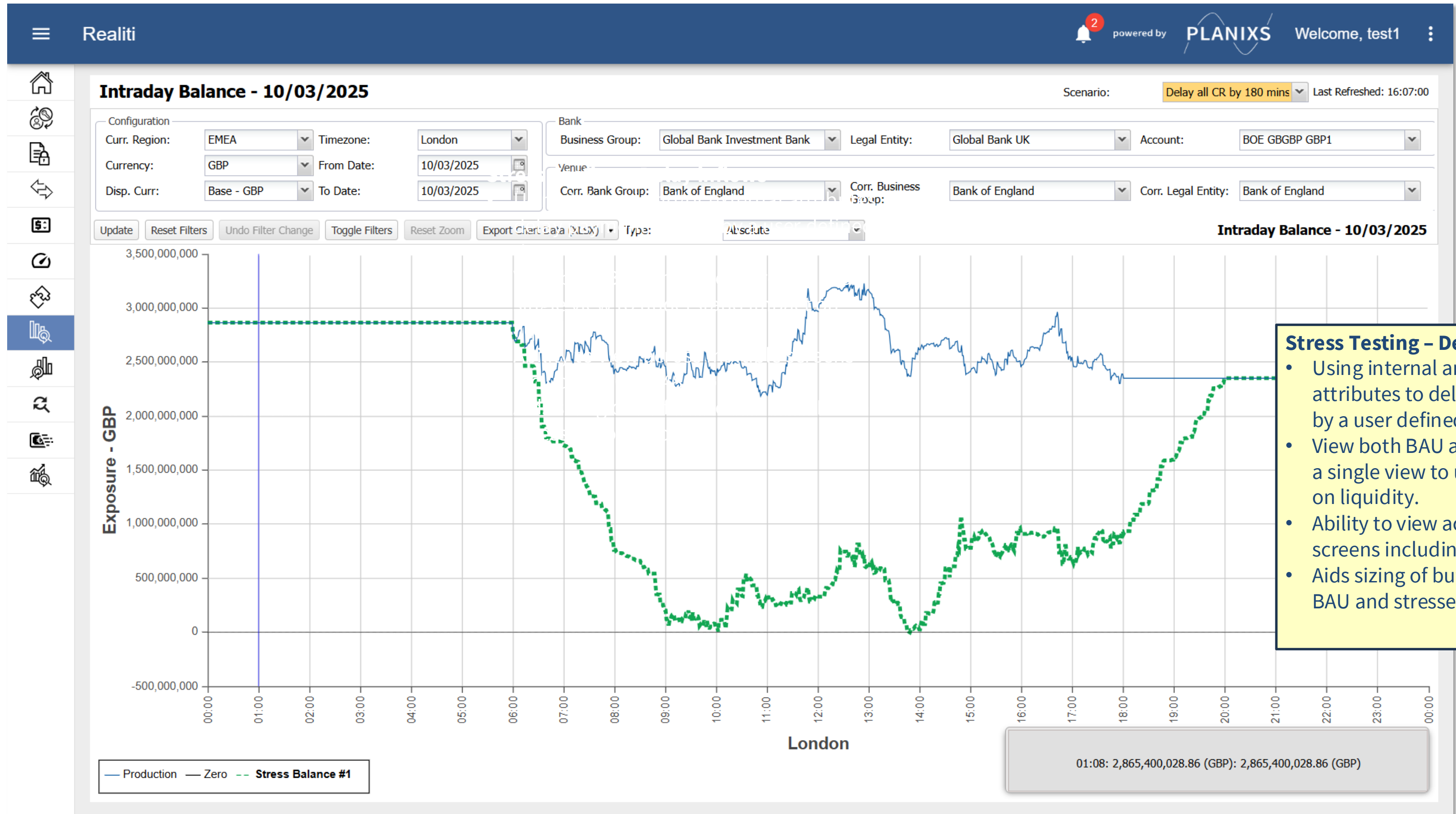
Securities Intraday Liquidity

Payment Control





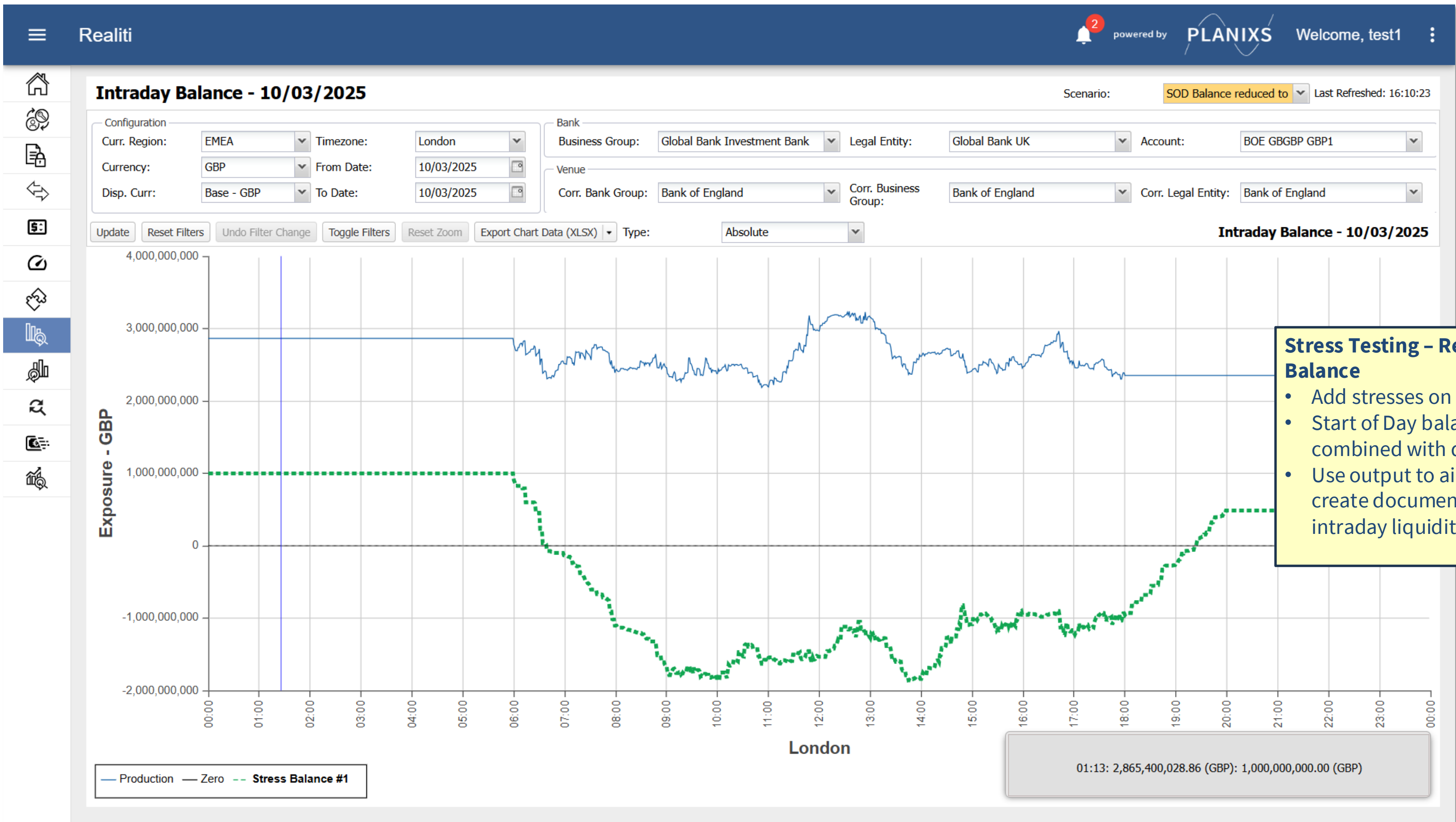
# Stress Testing – Factoring in Delays to Inflows



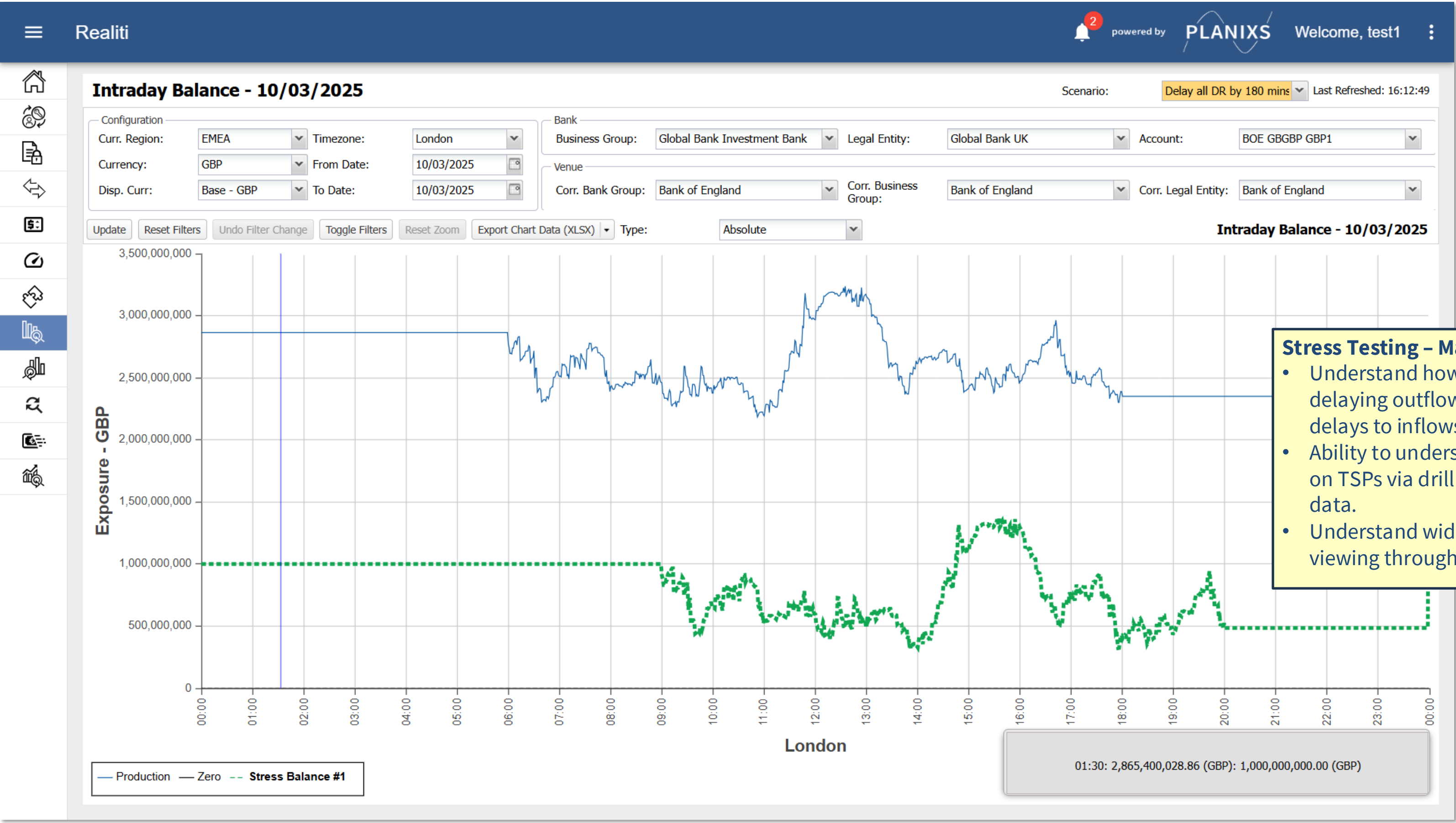
- ## Stress Testing – Delay inflows
- Using internal and/or external attributes to delay payment inflows by a user defined time.
  - View both BAU and Stress profiles in a single view to understand impact on liquidity.
  - Ability to view across multiple screens including BCBS248 reports.
  - Aids sizing of buffer to cover both BAU and stressed conditions.



# Stress Testing – Impact of Balance Reduction



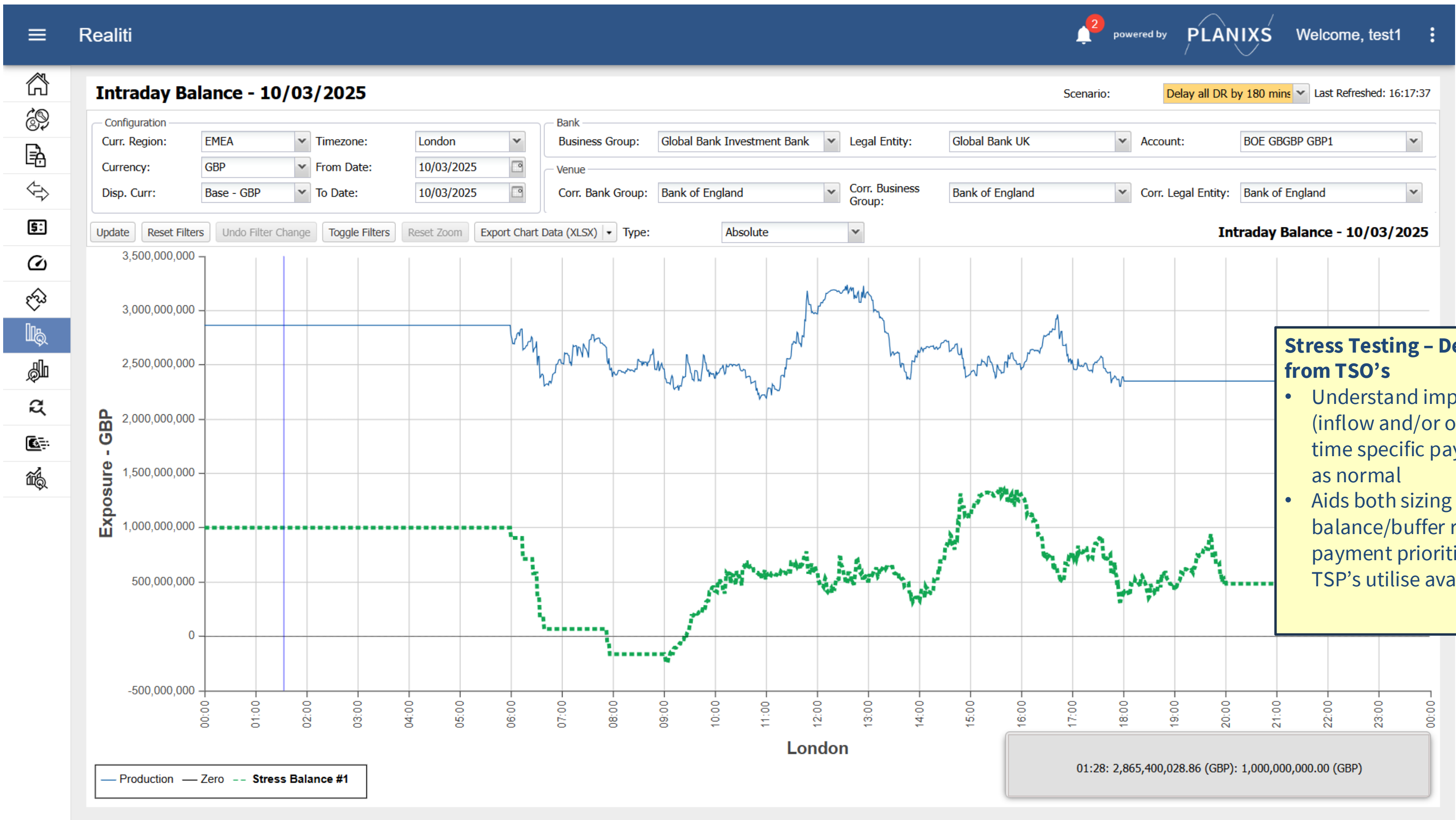
# Stress Testing – Managing outflows



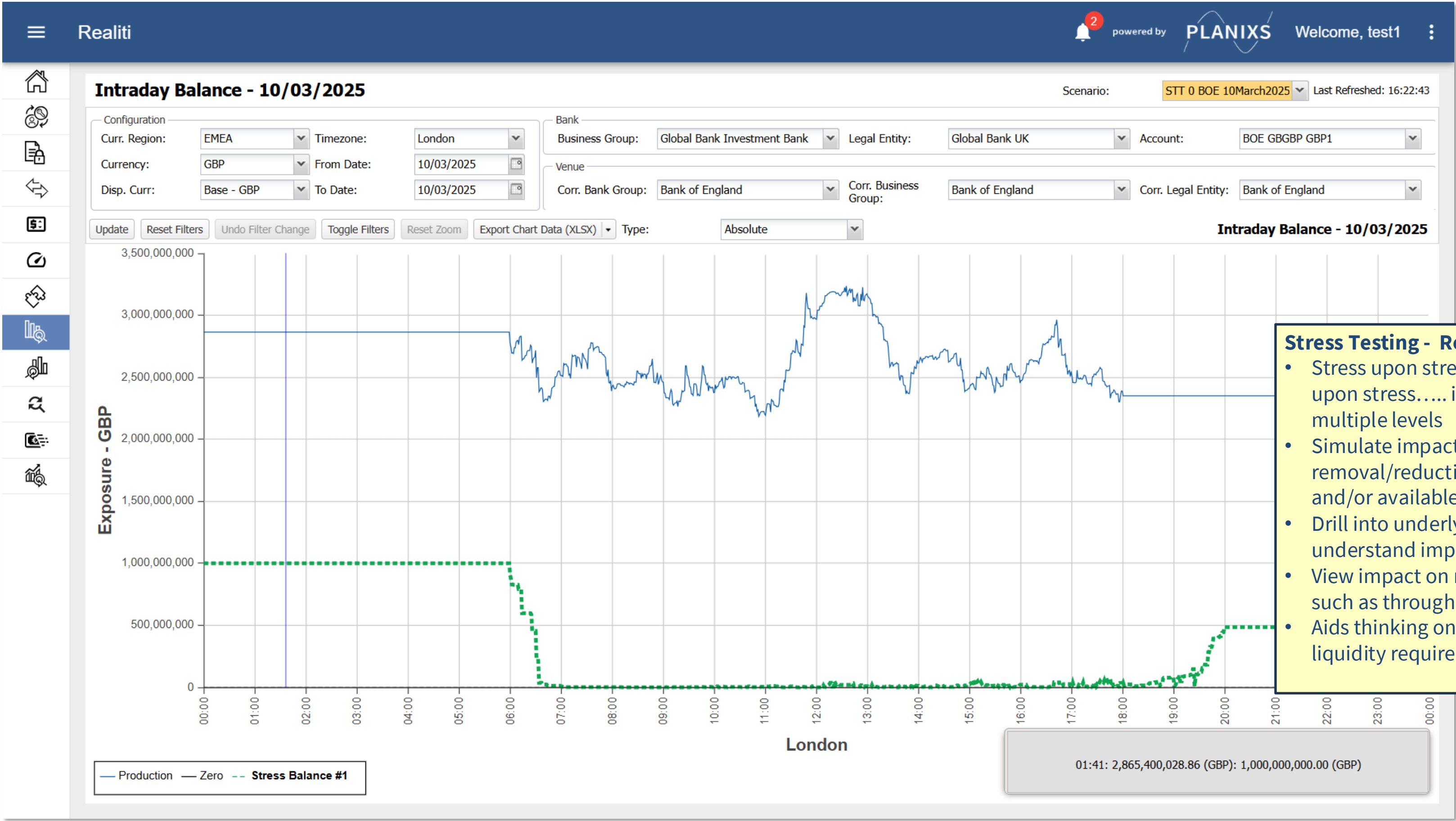
### Stress Testing – Managing outflows

- Understand how proactively delaying outflows could mitigate delays to inflows
- Ability to understand any impacts on TSPs via drill down to underlying data.
- Understand wider market impact by viewing throughput data

# Stress Testing – Contractual Flows maintained



# Stress Testing – Reduction in Credit Lines / Liquidity



### Stress Testing - Reduction in Credit

- Stress upon stress, upon stress, upon stress..... i.e. stress to multiple levels
- Simulate impact of removal/reduction of credit line and/or available liquidity.
- Drill into underlying data to understand impact on specific flows
- View impact on market guidelines such as throughput.
- Aids thinking on minimum levels of liquidity required.



Real Time Visibility

Forecasting Liquidity

Using Real Time Settlement Status

Intraday Stress Testing

Intraday Risk, Drivers and Costs

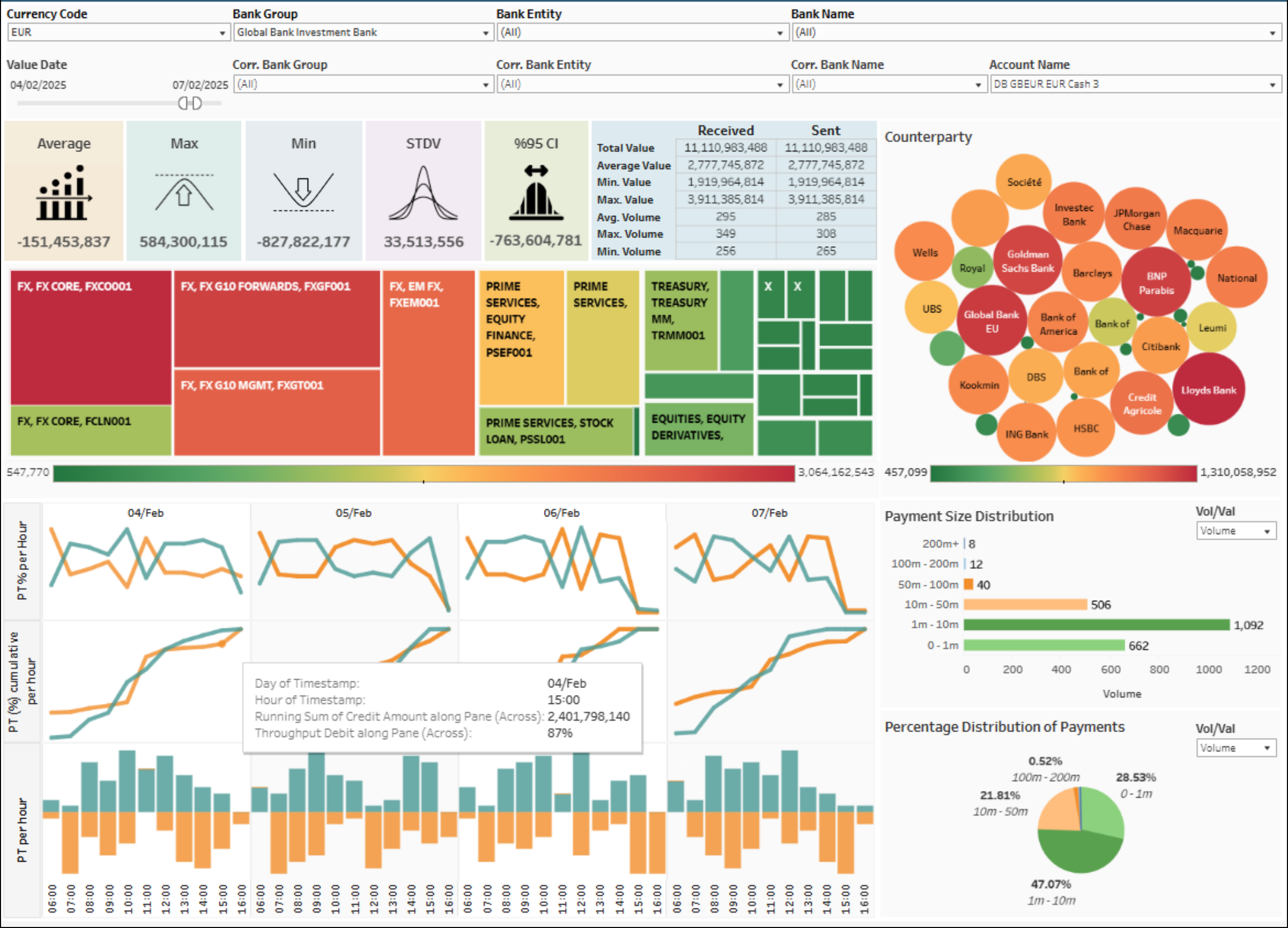
Securities Intraday Liquidity

Payment Control





# Intraday Risk Drivers



Average

-151,453,837

Max

584,300,115

Min

-827,822,177

STDV

33,513,556

%95 CI

-763,604,781

Received

Sent

Total Value	11,110,983,488	11,110,983,488
Average Value	2,777,745,872	2,777,745,872
Min. Value	1,919,964,814	1,919,964,814
Max. Value	3,911,385,814	3,911,385,814
Avg. Volume	295	285
Max. Volume	349	308
Min. Volume	256	265

Counterparty

FX, FX CORE, FXCO001

FX, FX G10 FORWARDS, FXGF001

FX, EM FX, FXEM001

PRIME SERVICES, EQUITY FINANCE, PSEF001

PRIME SERVICES,

TREASURY, TREASURY MM, TRMM001

FX, FX CORE, FCLN001

FX, FX G10 MGMT, FXGT001

PRIME SERVICES, STOCK LOAN, PSSLO01

EQUITIES, EQUITY DERIVATIVES,

547,770

3,064,162,543

04/Feb

05/Feb

06/Feb

07/Feb

PT% per Hour

PT (%) cumulative per hour

PT per hour

Day of Timestamp: 04/Feb

Hour of Timestamp: 15:00

Running Sum of Credit Amount along Pane (Across): 2,401,798,140

Throughput Debit along Pane (Across): 87%

Payment Size Distribution

Vol/Val

Volume

200m+	8
100m - 200m	12
50m - 100m	40
10m - 50m	506
1m - 10m	1,092
0 - 1m	662

Percentage Distribution of Payments

Vol/Val

Volume

0.52%	100m - 200m
21.81%	10m - 50m
47.07%	1m - 10m
28.53%	0 - 1m

- Liquidity Risk, Drivers and Trends**
- Dashboard tailored to intraday management enabling granular and regular reporting as well as for governance committees
  - Metrics aligned to BCBS248
  - Analyse key intraday drivers, usage and risks by multiple attributes e.g. product, segment, counterparty etc
  - Analysis can be at any level across the banking hierarchy and drill through available
  - Insight can be used understand trends as well as create Early Warning Indicators





Real Time Visibility

Forecasting Liquidity

Using Real Time Settlement Status

Intraday Stress Testing

Intraday Risk, Drivers and Costs

Securities Intraday Liquidity

Payment Control





# Securities Inventory View

Realiti

1

powered by

PLANIXS

Welcome, test1

Inventory

Last updated: 12:12:20, 12/03/2025

UPDATE

Date07/03/2025

TRANSACTION VIEW

Drag here to set row groups

Attributes

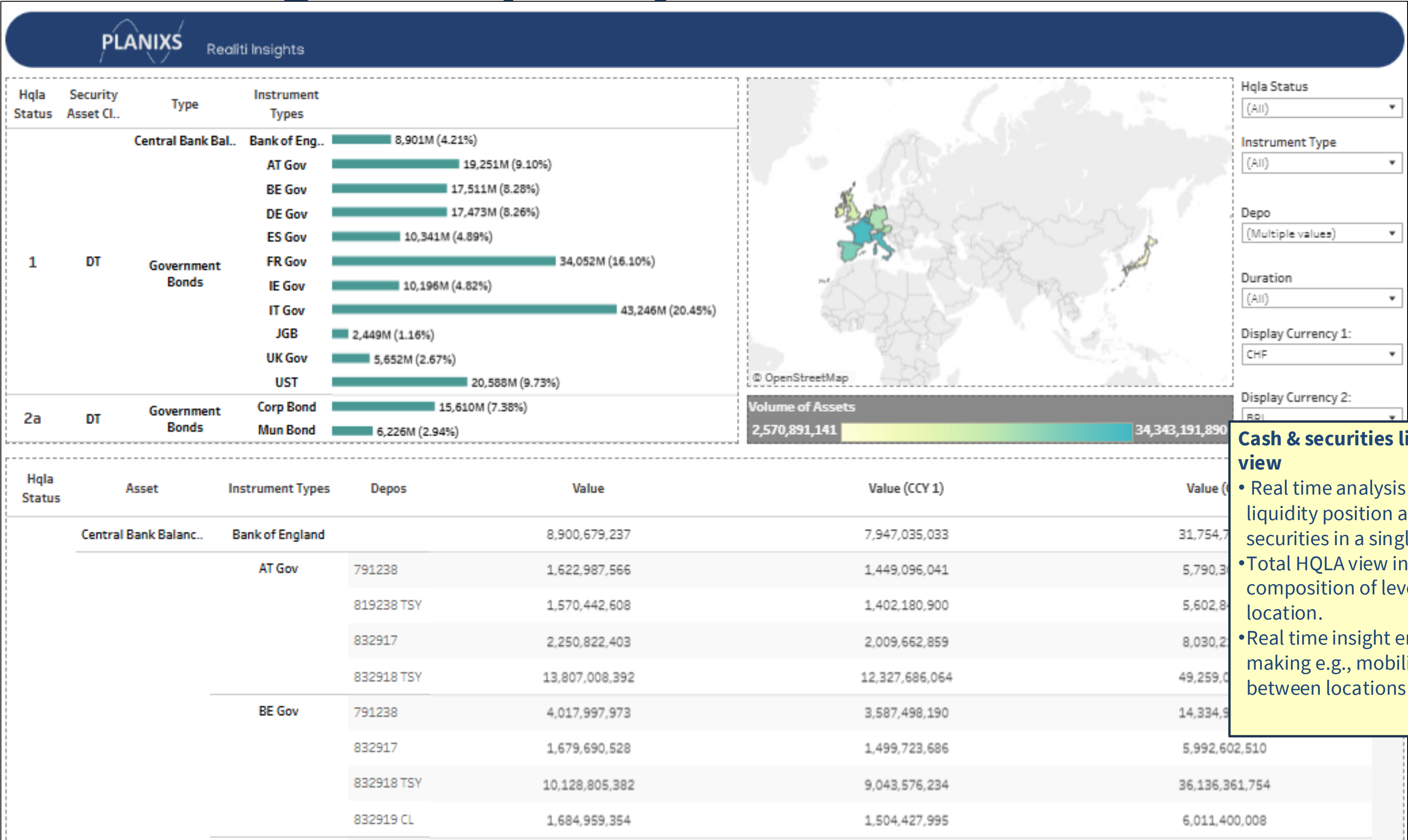
Aggregations

Depot Label	Security ID	Security Label	SOD Qty	SOD Value	SOD Haircut Value	Total Qty	Total Value	Total Haircut Value
884632 TSY	US912810TR95	United States of Am...	319,716,230	221,738,675.65	188,477,874.30	315,783,991	219,011,477.63	
884632 TSY	US91282CGZ86	United States of Am...	234,840,576	178,024,307.61	164,672,484.54	229,779,584	174,187,749.16	
884632 TSY	US91282CHJ36	United States of Am...	301,690,615	233,566,927.74	216,049,408.16	296,692,755	229,697,616.77	
884632 TSY	US91282CHT18	United States of Am...	307,233,853	237,858,466.84	214,072,620.15	303,303,403	234,815,537.81	
884632 TSY	US91282CHU80	United States of Am...	258,742,870	206,576,968.79	185,919,271.91	261,955,120	209,141,587.74	
832919 CL	DE0001030757	Federal Republic of ...	168,423,192	121,020,212.96	102,867,181.02	188,490,641	135,439,646.07	
832919 CL	NL0015001AM2	Kingdom of Netherl...	114,077,005	96,137,475.99	88,927,165.29	113,077,137	95,294,845.29	
832919 CL	FR0010070060	French Republic	96,448,836	96,682,179.96	87,013,961.96	96,454,595	96,687,952.89	
832919 CL	US912797GE19	United States of Am...	88,204,971	69,710,380.31	66,224,861.29	82,604,311	65,284,052.24	
832919 CL	DE0001030583	Federal Republic of ...	101,675,766	88,392,319.15	81,762,895.22	87,961,144	76,469,446.15	
832919 CL	FR0000571218	French Republic	68,650,226	68,207,321.32	63,091,772.22	64,695,331	64,277,941.77	
832919 CL	NL0011220108	Kingdom of Netherl...	155,932,350	130,027,459.60	123,526,086.62	140,460,716	117,126,113.18	
832919 CL	IT0005547408	Republic of Italy	87,822,521	77,128,004.33	73,271,604.11	114,833,338	100,849,600.87	
832919 CL	FR0011610436	French Republic	93,373,083	81,014,730.84	77,010,003.05	66,373,400	58,300,041.46	

Securities as a source of liquidity

- Cash liquidity is just part of the picture
- Real-time monitoring of securities at depot accounts to understand positions, cash-equivalent value pre and post haircut.
- Aid decisions such as “What have we got”, “Where is it”, “What is it worth” and “Can it be used”.

# Monitoring ALL liquidity sources





Real Time Visibility

Forecasting Liquidity

Using Real Time Settlement Status

Intraday Stress Testing

Intraday Risk, Drivers and Costs

Securities Intraday Liquidity

Payment Control



# Payment Control Liquidity Group

Realiti

powered by

PLANIXS

Welcome, test1

×

BARCLAYS GBP 01

VIEW HISTORY

Synced

DETAILS

ACCOUNTS

Label

BARCLAYS GBP 01

Required field

Currency

GBP

Required field

Start of Business

08:30 AM

Required field

Frequency of Checks

15 mins

Timezone

London

Required field

End of Business

04:00 PM

Required field

Balance Threshold

-1000000000

ID

9e295dae-2ed7-4429-98c5-abcc4a338fcb

Status

Active

Created

18/03/2024, 10:43:37

Modified

28/11/2024, 14:25:18

SAVE

Liquidity groups

- Group together one or more accounts which share a credit facility
- Define periods when throttling begins and is lifted.
- Define liquidity usage thresholds used by the automated liquidity checker to manage payments.

# Impact of Payment Control Rules

Realiti

2

powered by PLANIXS

Welcome, test1

Payment Throttling

Last refreshed: 23/01/2025, 11:12:09

EMERGENCY STOP

0 rows selected

RELEASE

Liquidity Group	Date	Amount	Checks	Released at	Resume From	Current Status	Release Priority Class	Description	Rule
<div></div>	2025-01-23								
<div>BARC GBUK GBP 01</div>	2025-01-23	-33,000,011.00	11	11:00 am	11:00 am	Released	50	Sufficient liquidity - with thresh...	Pause Payment 11am
<div>BARC GBUK GBP 01</div>	2025-01-23	-215,000,016.00	11		04:00 pm	Paused	50	Awaiting 'Resume from' time	Requires Manual Rele...
<div>BARC GBUK GBP 01</div>	2025-01-23	-20,000,009.00	9	10:30 am		Released	85	Sufficient liquidity - with thresh...	Change Priority Low
<div>BARC GBUK GBP 01</div>	2025-01-23	-50,000,008.00	9	10:30 am		Released	85	Sufficient liquidity - with thresh...	Change Priority Low
<div>BARC GBUK GBP 01</div>	2025-01-23	-33,000,025.00	6	09:45 am		Released	50	Sufficient liquidity - with thresh...	
<div>BARC GBUK GBP 01</div>	2025-01-23	-25,000,024.00	6	09:45 am		Released	50	Sufficient liquidity - with thresh...	
<div>BARC GBUK GBP 01</div>	2025-01-23	-50,000,022.00	1	08:30 am		Released	15	Sufficient liquidity - with thresh...	Chan
<div>BARC GBUK GBP 01</div>	2025-01-23	-10,000,019.00	1	08:30 am		Released	50	Sufficient liquidity - with thresh...	
<div>BARC GBUK GBP 01</div>	2025-01-23	-20,000,020.00	1	08:30 am		Released	50	Sufficient liquidity - with thresh...	
<div>BARC GBUK GBP 01</div>	2025-01-23	-5,505,021.00	1	08:30 am		Released	50	Sufficient liquidity - with thresh...	
<div>BARC GBUK GBP 01</div>	2025-01-23	-25,000,015.00	1	08:30 am		Released	50	Sufficient liquidity - with thresh...	
<div>BARC GBUK GBP 01</div>	2025-01-23	-60,000,012.00	1	08:30 am		Released	50	Sufficient liquidity - with thresh...	
<div>BARC GBUK GBP 01</div>	2025-01-23	-20,000,023.00	1	08:30 am		Released	15	Sufficient liquidity - with thresh...	Change Priority High
<div>BARC GBUK GBP 01</div>	2025-01-23	-60,000,018.00	1	08:30 am		Released	50	Sufficient liquidity - with thresh...	
<div>BARC GBUK GBP 01</div>	2025-01-23	-20,000,010.00	1	08:30 am		Released	50	Sufficient liquidity - with thresh...	
<div>BARC GBUK GBP 01</div>	2025-01-23	-33,000,017.00	1	08:30 am		Released	50	Sufficient liquidity - with thresh...	
<div>BARC GBUK GBP 01</div>	2025-01-23	-3,600,026.00	1	08:30 am		Released	50	Sufficient liquidity - with thresh...	

Columns

Filters

1 to 17 of 23

Page 1 of 2

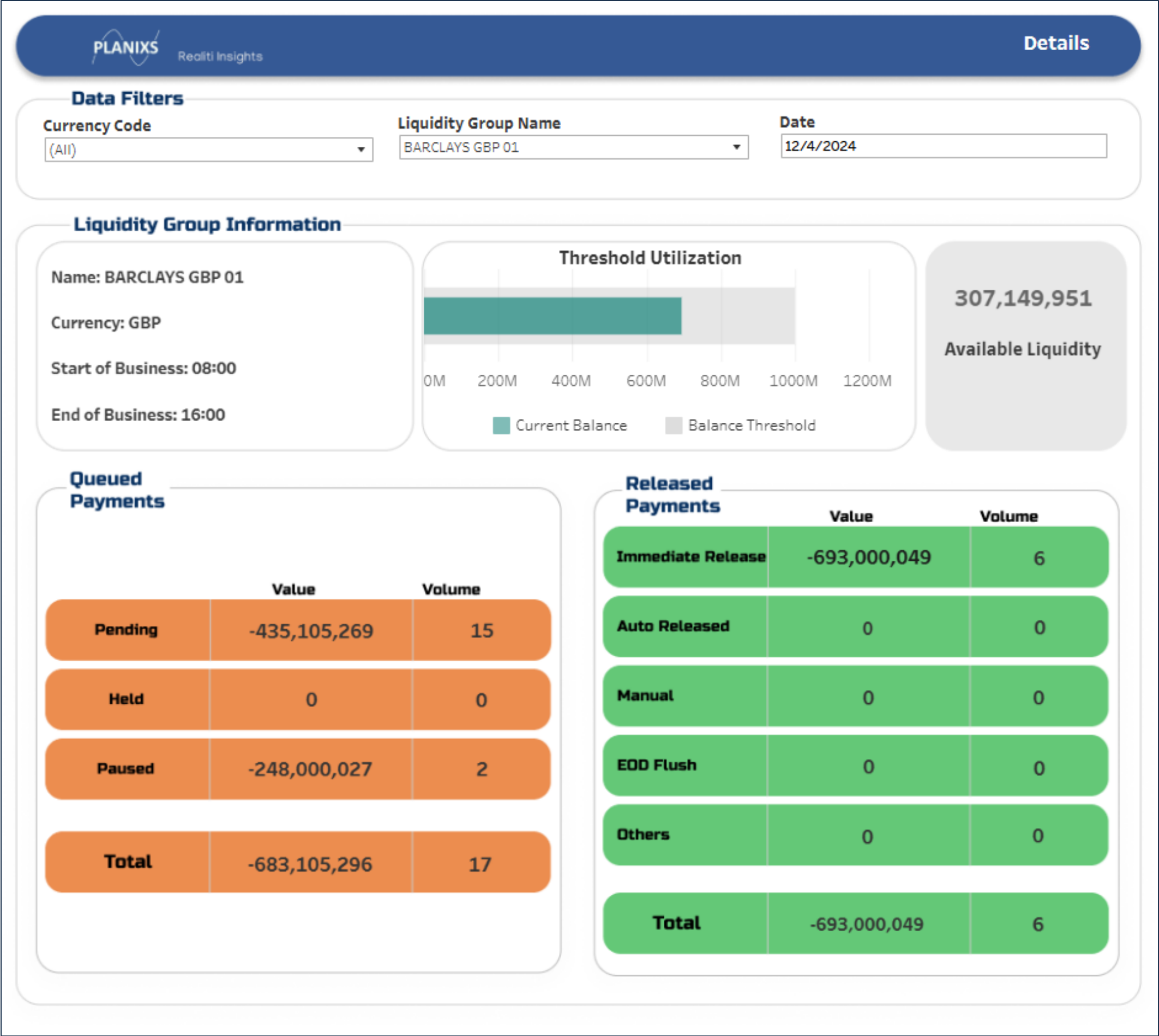
Payment Queue

• View the payment queue and the automated payment control decision making which has taken place

• Business rules to prioritise payments versus peer payments, pause payments, immediately release payment or put payments in a manual release queue



# Payment Control



**Payment Dashboard**

- Summary view of Payment Control processing, for both queued and released payments and their reason.
- Insight into the amount of currently available liquidity versus the defined usage threshold.